

Learn. Heal. Thrive.

Together.

 *Children's Bureau, Inc.*

Annual Report 2019

Letter from the CEO

Dear Friends,



I am so grateful for each of you who supported the Children's Bureau mission in 2019. It is because of you that we were able to care for 40,929 children throughout Indiana. We are humbled and grateful that you chose to be there beside us, supporting the critical work that we do in homes across the state. We are grateful to the families who were vulnerable enough to allow us into their homes to help them as they sought to learn from their challenges, heal as families and give their children the opportunity to thrive. The children that we served will have better lives and brighter futures because you partnered with us in our work.

When I think about the concept of being in this work together with those who have selflessly supported this organization, I would be remiss if I didn't take this moment to look back at the history of our organization and the many thousands of children whose lives have been changed, including my own. For the past 87 years the children served by Children's Bureau have had better lives due to the support of the women who made up the Children's Bureau Auxiliary.

These women made real impact and they knew the value of serving together. What they accomplished collectively would have been impossible individually. I enjoyed the ladies retelling of stories about times when they had to find someone to watch their own children so that they could volunteer to watch children in need. I've been with them when they reflected on the work (and the fun) that went into raising money and securing resources needed so that the children we served would enjoy the same opportunities as their own children. I most enjoyed their reflections on the relationships they built with the young people who lived in CB group homes and the shelters over the years. These women understood the value of committing to helping the kids learn, heal and thrive. They partnered with CB for decades and together they learned, promoted healing and witnessed numerous children's journey to thrive. The Auxiliary represents a level of service and sense of civic responsibility that leaves me humbled and honored to know them. They stood by this agency steadfastly for many years, leaving behind a wonderful legacy of children and youth whose lives were forever changed for the better. For many of them, they were equally impacted and grateful, including beautiful recounts of the lasting personal impact and special gifts upon their passing.

The impact that Children's Bureau has in the community is possible because of the support we receive from all of our volunteers, donors, staff and the community. This report highlights what we accomplished together in 2019. We look forward to serving with you in the coming year as we continue to help children and families learn, heal and thrive. Together.

//

***The impact that
Children's Bureau
has in the community
is possible because of
the support we
receive from all of our
volunteers, donors,
staff and the
community.***

//

**Fondly,
Tina Cloer**



Our Mission

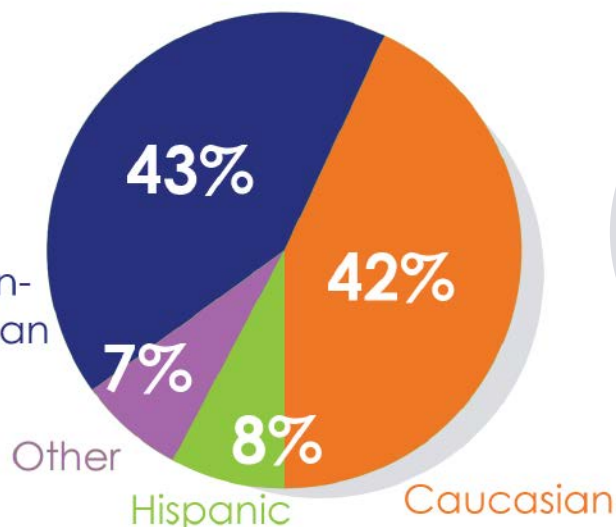
Preserving families and protecting the future of Indiana's children.

Our Vision

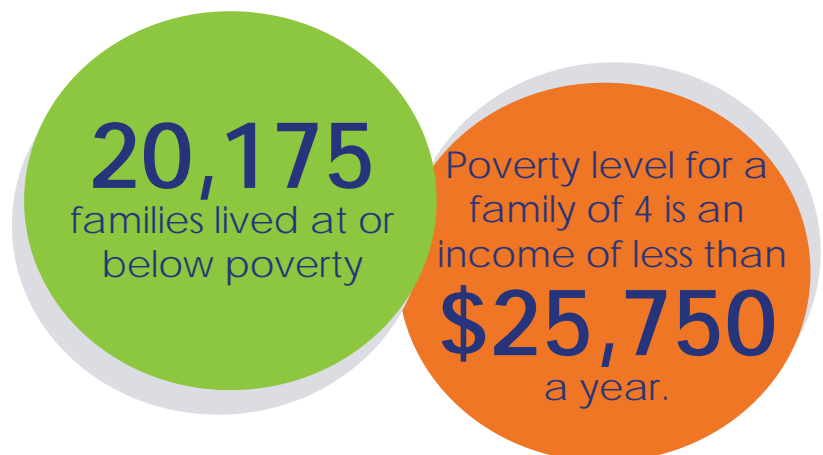
A healthy family for every child.

***In 2019, Children's Bureau
served 40,929 children
in over 20,827 families.***

Of the children served....



Of the families served....



The End of an Era

In 2019, Children's Bureau Auxiliary members voted to dissolve Children's Bureau Auxiliary, Inc. and become a committee of the board of directors. After 87 years of tireless service, it seems fitting to look back on some of the highlights of its history.

Twenty-two women band together and become charter members of the Auxiliary to the Children's Bureau of the Indianapolis Orphans' Asylum; its purpose was to provide recreational activities for orphans and to help in any way possible.

October 26, 1932

The orphanage closed and the CB transitioned from a public to a private non-profit.

1941

The Auxiliary grows to 75 women.

1944

The Auxiliary has 104 members.

1951

In the '70s, the Auxiliary continues to provide nursery school expenses, furniture, vacuum cleaners, Christmas gifts for house parents and residents of Evans, Mallon and Garrard Houses, foster family events, clothing, and graduation gifts for children in foster care, YMCA memberships, toys and holiday parties.

1970s

Rosie Lanham's garage is home to 10,000 copies of the reprinted Sesqui-Samplings cookbook. All books are sold.

1970s

Fundraising dances are held at Lafayette Square in: "Pole Potpourri" and "La Fete de Lafayette" with music by Al Cobine; tickets were \$10/couple.

1971 & 1972

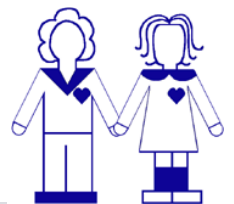
The Auxiliary supported scholarships for 12 individuals.

1958-1971

The Auxiliary hosts a fundraising dance at the Weir Cook Airport Hangar.

1973

The Something Special Shop opens in 1976. It is located above Annie Laurie Interiors in Broad Ripple; 97 Auxiliary members staffed the shop 5 hours a day, year around. In 1982 the Something Special Shop moves across from Glendale Mall and hires a manager; it was open 6 days a week.



The first of many Monte Carlo Nights are held at Mallon House.

1973

The Auxiliary donates \$8,000 to help furnish a new Garrard House.

1974

The Auxiliary hosts a Marilyn Hanson's gourmet cooking school fundraiser.

1976-1978

Auxiliary members briefly house and care for girls after Morris House fire.

1977

Sally Skidmore creates the Auxiliary logo.

1978

In 1988, the Auxiliary receives "Babe in Arms" in recognition for its 56 years of service. In 1989 a High Tea fundraiser is held at the Governor's Mansion and hosted by first lady Susan Bayh. The Auxiliary also hosts an open house for the new Evans House, designed by architect John Pecsok and built next door to the old Evans House. Janet Myers retires in 1989, after 29 years, and is named an honorary member of the Auxiliary in 1990.

late 1980s - 1990

Mini fundraisers in the '80s included discount coupon days, Entertainment Books, benefit performance of "Brighton Beach Memoirs" at Civic Theatre, Celebrity Cookbook sales at Kroger and an association with Sav-A-Lot thrift store. In 1987, the Auxiliary formed a committee to help Project Safe Place's Safe Place Saturday and with annual Safe Place site checks.

The Don Hein Classic Fore Children's Bureau raises \$10,693 and features Indy 500 drivers, Colts players, radio/TV personalities, writers from the Star/News, and other guest golfers.

1990

The first Don Hein Classic Fore Children's Bureau is held at Valle Vista Golf Club in Greenwood.

1989

Early fundraisers included flower sales, tennis matches, rummage sales, puppet shows and bridge parties. Funds were used for music lessons, orthopedic shoes, Scout uniforms, graduation clothing, college tuition, summer camp, international exchange visits and staff scholarships.

The Auxiliary hosts 8 charity balls at Riverside Amusement Park including: Mardi Gras Ball, One Magic Night Ball, Treasure Island Ball, Through the Looking Glass Ball, Kiltie Karnival and a Centennial Benefit Ball to celebrate the Bureau's 100th anniversary.

Auxiliary membership is 112 and 150 children are impacted.

1955

The Auxiliary becomes an incorporated entity.

1956

The Auxiliary has 141 members.

1960

The Auxiliary's name is changed to the Auxiliary to the Children's Bureau of Indianapolis, Inc.

1961

The first Sustainers' Luncheon is held at Hillcrest Country Club.

October 10, 1966

Activities in the '70s Included community speaking engagements, foster family events/parties, group home outings, tutoring, parties, and clerical assistance. The "Big Top Twirl" brought circus merriment to Indianapolis in 1970.

1970s

Sally Evans Harrell & her sister donate what becomes Evans House, a group home for pregnant women.

1970

Roberta West Nicholson is elected the first honorary member of the Auxiliary for her advocacy efforts on behalf of children.

1970

In the '60s and '70s, the Auxiliary's six orientation sessions, led by Janet Myers, included field trips to Theodora House, Suemma Coleman Home, the English Foundation Building, group homes, Lutherwood, Marion County Juvenile Court & Juvenile Center, and a detailed overview of the Children's Bureau.

late 1960s - 1970s

In the 1970's and 1980's, Auxiliary members donated between 4,000 and 11,000 service hours/year. In 1981 Ann and Moses Gray host the first annual pig roast for members and group home children; the tradition continued for 6 years.

The Auxiliary donates \$15,000 to help furnish the new offices in the English Foundation Building; Elaine Schuette created the design.

1981

The Auxiliary art auction at Quincy's in the Sheraton West Hotel raises \$6,000.

1982

Marilyn Pecsok is Auxiliary President.

1982-83

The Auxiliary celebrates its 50th anniversary with a proclamation from Mayor Bill Hudnut and a dinner at Meridian Hills Country Club. Betty Wood, 1946 Auxiliary President, recaps the Auxiliary history and Roberta Nicholson speaks about the Children's Bureau history.

1982

The Something Special Shop closes after 8 years in operation. A final gift of \$10,240.04 is donated and all remaining merchandise is donated to Homes for Black Children, a CB program. In the same year, the Barbara Wasser Melchert Grade Incentive Program is established and the Angel Fund fundraiser begins. The first year raises \$4,545. In the 1980's The Angel Fund provides furnishings, medical equipment, playground equipment, tutoring materials, a kitchen remodel at Morris House and therapeutic playroom equipment.

1984

Following the sudden death of James J. Mallon, former Children's Bureau CEO, an annual award is created to recognize staff, board, community or Auxiliary member's outstanding service to children. Mallon Award recipients in the '80s: Irene Doney, Janet Myers, Rosie Lanham, Barbara Grayson, Janice Klein, Ann Frick, and BJ Maley. In 1984, Auxiliary members (110 total) are trained as tour guides for the Hoosier Dome Tour Program. Tours are provided to 50,000 people in the first 11 months. Proceeds from the Hoosier Dome Tour Program hit \$21,000 the first year and reached \$95,760.67 in five years.

1980s

Auxillary Timeline Continued

Mini fundraisers in the '90s include the L.S. Ayres Charity Day, High Tea at the Governor's Residence, Entertainment Books, Zoo Books, Auto Mania, Joe (O'Malia) Cares project, Wildlife artist Robert Bateman signing, Uniglobe Travel donation, Marsh Fresh Idea cards, and Chico's open house. The Auxiliary raised \$322,185.78 between 1987 & 1996.

Mallon Award recipients in the '90s include: Sally Harrell, Ann & Moses Gray, Kathleen McGrath, Marilyn Pecsok, Nadine Barnett, Becky Gatman, Jane Hackman, Beverly Hanna, Ron Due Carpenter, and Ginny Parsons.

Dinner Dances are held at the Irsay Party Pavilion in 1990 and 1991 and chaired by "Jingle" Rowe and "Bell" Skidmore (Joanie and Sally). The Million Penny fundraiser raises \$22,294.66 in 1990 and \$10,575.93 in 1991.

The Auxiliary's 60th anniversary celebration is held at Oak Hill Mansion.

The first annual Fashion Show and Luncheon is hosted.

1990 - 1991

October 26, 1992

1995

Mallon Award recipients in the 2000s: Stephen Browne, Anna Marie & Walter Bruen, Clara Anderson, Connie Odekirk, Vicki Snider, Mary Kate Myers, Andra Sudler, Rick Ashby, Charles Lanham, and Sue McClure.

The agency's name is changed to Children's Bureau, Inc. and the Auxiliary becomes Children's Bureau Auxiliary, Inc.

Children's Bureau celebrates its Sesquicentennial with help from the Auxiliary.

The 13th annual golf outing is renamed the Tom Zupancic's Golf Outing For Children's Bureau.

Barbara Grayson Award is established and given to the Auxiliary member with the most direct service hours.

1998 the Auxiliary provided volunteers for the first Dave Thomas Celebrity Cook-off at Benihana; the event was co-chaired by member Becky Gatman.

2003

2001

2001

2000

1998

Mini fundraisers in the 2000s included a sidewalk sale at Styles Boutique, Extravaganza Garage Sale, Art Festival, RecycleFirst, Bureaus for the Bureau, & Marsh Supermarket shopper program.

Mallon Award recipients in the 2010s: Patty McKinniss, Saundra Kurker, Jane Quinn, Jon Bennett, Betsy Kerr, Debbie Kirk, Elaine Grant, Melissa Mates, Ginny Phillips and Tina Cloer.

The Rosie Lanham "Something Special" Memorial Fund is established.

The Angel Fund raises \$12,922.72.

The Auxiliary becomes a member of the Indianapolis Council of Women.

The Auxiliary donates \$15,000 to the Family Support Center Campaign.

CB Auxiliary members vote to transition to the CBA Committee.

2006

2006

2007

2008

2019



Auxiliary Members in 2010 touring the new Family Support Center



Auxiliary Members at the 2017 Staff Appreciation Luncheon



Tina Cloer, President and CEO, with Roni Fritz

Executive Staff

Tina Cloer, President & CEO

Abby Swift, Vice President, Residential & Older Youth Services

Andra Martinez, Vice President, Communications & Development

Brooke Clawson, Vice President, Foster Care & Adoption

Darlene Daniels, Vice President, Human Resources

Ericka Stiles, Vice President, Quality & Innovation

Jill Kelly, Vice President, Community & Home Based Services

Kevin Cox, Vice President, Information Systems

Mark Kern, Chief Financial Officer

Government Contracts
\$26,660,592

Contributions/Special Events
\$1,353,267

United Way \$414,295

In-Kind \$362,611

Other Income \$543,332

Revenue

Expenses

Programs & Services
\$24,817,871

Management/General
\$3,828,185

Fundraising \$595,463

Board of Directors

Officers of the Board of Directors

Nick Shelton, *Chair*

Joseph Breen, *Vice Chair*

Carrie Houston, *Secretary*

Matt Nelson, *Treasurer*

Donna Reynolds, *Immediate Past Chair*

Directors

Ann Frick, *Honorary Lifetime Member*

Stephen Abdalla

Michael Baker

Dr. Deborah Balogh

Emily Biehn

Anthony J. Bonacuse

Marc Caito

Gordan Castetter, Jr.

Cody Coppotelli

Jenny Froehle

Lisa Gomperts

Richard Hayes

Carrie Henderson

Dr. Rona C. Howenstine

John Huesing

Troy Kafka

Michele Kawiecki

Dr. Gloria King

Ryan Lobsiger

Amy Longoria

Bette-Jane Maley

Kayla Nymeyer

Jon R. Owens

Chris Phillips

Kevin Poad

Blake Schulz

Robin Shaw

Prentice C. Stovall Jr.

Katy Stowers

Tina Sullivan

Carole Whitsken-Puls

Dr. Ramarao Yeleti

Our Corporate Partners



Megan Scott, of Schmidt Associates, reading to the kiddos at the children's shelter

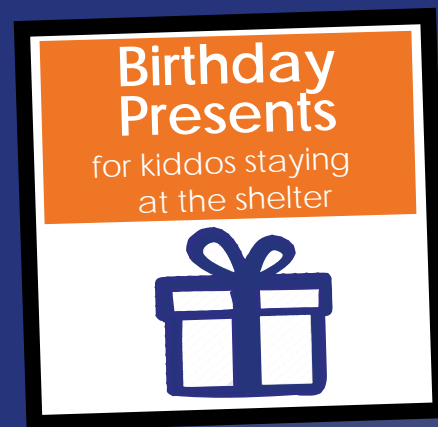
Children's Bureau is proud to partner with companies that believe providing kids a chance to succeed is the precursor to a stronger community.

Our team is always identifying new ways to engage corporate partners' employees in the mission supported by their employer. Employees of our corporate partner companies attend Children's Bureau special events, volunteer and personally donate.

Our Corporate Partners 2019-2020



Donor dollars provide



Zuleica Hoover and Tracy
Bryant, RenPSG

RenPSG's mission is to amplify charitable giving in a significant and meaningful manner. Our partnership with CB is an extension of that. As a Corporate Partner, we've learned of all the amazing things CB provides to families and children in the community. We are amazed at CB's dedication to preserve and protect Indiana families and children.

Zuleica Hoover

Human Resources Generalist, RenPSG



An Exceptional Amount of Love

Erin Carter recounts her journey of becoming a foster parent and adopting her daughter.

November 2011

I'm at a concert at The Vogue, and have snagged a coveted seat at a table for three. I'm alone, pensive, and ready to immerse myself in song. Enter the guy in the Hawaiian shirt. "Are you saving these seats for friends?" he asks. "Oh, no," I think, as I say, "No, you're welcome to them."

He disappears and returns with his partner, not in a Hawaiian shirt. We politely do introductions; I think maybe they'll keep to

themselves. It turns out that they have exquisite musical tastes, we have a mutual friend, and in between songs, one of them is super-chatty. By the end of the night, contact information is exchanged. Facebook invitations are sent. It seems we have become friends.

November 2013

I am living alone in a 2-bedroom house, and feeling like the second bedroom should be put to

good use. I do what I've done dozens of times: I solicit the advice of Hawaiian Shirt Guy and Graciously Subdued Husband. They have one child, adopted from foster care years ago, and are excited nearly-empty nesters. They are people for whom every moment is a "yay-able" moment, and who have made unflinching, unqualified love the guiding principle of their lives. By June 2014, I'm licensed and prepared to be a foster parent.

*Welcome to the end of
being alone inside your
mind. You're tethered to
another, and you're
worried all the time.*

August 2014

With my first foster placement comes the realization that I am only prepared if you have a very loose definition of the term. What I lack in preparedness I make up for with incredible villagers who come out in full force, providing me with toys and clothes and musical tables and noise-cancelling headphones. Tantrums and laughter, visits and court dates, exhaustion and Elmo. I get into the groove of this foster parenting thing as placements come and go. This is what I've signed up for: the not-so-easy goodbyes.

October 2015

I accept a placement for a 2-year-old girl. She's the youngest of four children, the only girl, my fifth foster child and, unbeknownst to me, my always child. She is a whirlwind of chaos and curls, a mess of twirling and turmoil, a hodgepodge of happy giggles and complete dismay. We ride the roller coaster of visits and case managers, therapy appointments and court hearings and team meetings, steps forward and steps back. She learns her letters while I learn about sensory processing. We teach each other a thing or two about trauma and attachment. The plan changes to adoption but in the back of my head, I know she's

leaving. That's what I signed up for. That's what they all do, and what they're supposed to do.

*The first things that she took
from me were selfishness
and sleep. She broke a
thousand heirlooms I was
never meant to keep. She
filled my life with color,
canceled plans and trashed
my car. But none of that was
ever who we are.*

August 2017

It seems she's not leaving. I make her first mom a promise that this child's family will be mine, that I will actively pursue connections with her brothers' families, and that she will always know she is loved. Eight months later, we are overly tired, overly excited, and overly paper-worked. We are late to our own adoption hearing, but we make it.

Always Day

Nothing feels different, but everything changes. The day after Always Day: We take a spur-of-the-moment day trip to Brown County with Hawaiian Shirt Guy and Graciously Subdued Husband (who are now her godparents). Her older brother, who needs some laughter and spontaneity in his days, joins us. The day is full. Our hearts are full. We settle in to life without case managers, and they start the process of reactivating their foster license to become her brother's

placement. Nearly overnight, we add half a dozen people on either side of Indianapolis to our family. She and her brother do sleepovers and camp-outs (in foster parent language, "respite"). Birthdays are celebrated, soccer games attended, school fundraisers contributed to. Christmas is now a 15-person affair. We don't have baby pictures, but we make up for it by documenting all the sibling moments we can. Many times, we get by only because our found family is as fond of grace as they are of laughter. In the meantime, by happenstance or divine intervention, I am offered a position at Children's Bureau. It is as close to a dream job as I will ever have and may be as close to fostering or adopting another child as I will ever get. And 6 weeks into a seemingly unending stay-at-home order, Hawaiian Shirt Guy and Graciously Subdued Husband adopt her brother. Two years after their first meeting, he is the last of the four to find his forever home, which comes with two dads, two dogs, another older sibling, an exceptional amount of love, and more time with his little sister than he probably wants. This is what we've signed up for, and while it may not always seem like the best seat in the house, it sure beats sitting alone at a table for three.

**Lyrics to "The Mother," by
Brandi Carlile.*

***Reference to "yay-able
moments" gratefully
borrowed from Brian
Andreas.*

Our Donors

\$10,000+

ALDI, Inc.
Anthem Blue Cross & Blue Shield
Anthem Blue Cross and Blue Shield Foundation
BMO Harris Bank
CareSource
Children's Bureau Auxiliary Committee
Dave Thomas Foundation for Adoption
DEEM, LLC
Delta Faucet Company
Carol & Gary Edwards Exchange Club Foundation of Anderson, Inc.
Exchange Club of Speedway
Family and Youth Services Bureau Supported Program
The Wilma M. Gluesenkamp Donor-Advised Pass-Through Fund, a fund of The Indianapolis Foundation
Henry County Community Foundation
Huntington Bank
Indiana Youth Services Association
The Jackson Group, An RR Donnelley Company
Johnson County Community Foundation, Inc.
Lilly Endowment Inc.
The Albert Gilgour Trust Fund and March of Dimes, Inc.
Dr. Polly A. Moore
Matthew & Candace Nelson
Nicholas H. Noyes, Jr. Memorial Foundation, Inc.
Nina Mason Pulliam Charitable Trust
Donna Reynolds & David Whitman

Samerian Foundation



United Way of Madison County
Van Riper-Woodard Family Foundation

\$5,000-9,999

Anonymous Donors
AAA Exterminating, Inc.
Stephen & Joni Abdalla
Accelerent
ADVISA
American Wholesale Furniture
Anderson Noon Exchange Club
Angie's List and Home Advisor
Arni's Restaurant, Inc.
B&W Plumbing and Heating
Anthony & Polly Bonacuse
Cargo Services Inc.
Caterpillar, Inc.
Centier Bank
CliftonLarsonAllen LLP
Commercial Office Environments
Community Health Network
Duke Realty
enVista LLC
First Merchants Corporation
Jenny & Tom Froehle
Goelzer Investment Management, Inc.
Hancock County Community Foundation and Strong Families and Youth Fund
Angela Hicks Bowman
Honda Manufacturing of Indiana, LLC

The Huntington Foundation
Ice Miller LLP
Image Pros
Indiana Sports Corporation
Indiana State Department of Health
Indianapolis Colts Insurance Management Group
International Gaming Technology Indiana
Katz, Sapper & Miller
Bill & Jenni Lehman
Lumina Foundation
Madison County Community Foundation
Managed Health Services
MICI-AHEC
Millennium Sounds
Miller Pipeline
NFP Insurance Agency
Pacers Sports & Entertainment
Penske Chevrolet
Penske Honda
RenPSG
Sandler Training, Trustpointe
Shelton Machinery
Sky Zone Fishers
Dr. & Mrs. Richard A. Steele, Jr.
The Brave Heart Foundation
The Glick Family Foundation
Thompson Insurance & Financial Services
Van Ausdall & Farrar
WestPoint Financial Group
Charles C. Williams

\$1,000-4,999

Anonymous Donors
Aadvanced Limousines
American Health and Wellness Group
Arcelormittal Matching Gifts Program
Michael & Erin Baker
Ralph & Jodie Balber

Deborah & Douglas Balogh
Tucker & Sierra Barnhart
John & Cheryl Battisti
The Dr. Lawrence M. and Eldoris J. Borst Family Fund, a fund of Central Indiana Community Foundation
Braden Business Systems
Anna Marie & Walter Bruen
Dorothy Burnside
Marc & Colleen Caito
Gordan Castetter, Jr.
Brooke Clawson
Rob Clements
Tina & Ron Cloer
Timothy F. Coleman
Community Management Services
Cody & Seneca Coppotelli
Cushman & Wakefield
F Peter & Becky Daniels
Randie & Becky Dial
Leslie Dickmann
Downtown Optimist Foundation
Ed Block Courage Award Foundation
Edge Endo, LLC
Enterprise Holdings Foundation
Estate of Barbara Evans Farris
EverEffect
Expense Reduction Analysts
FE Moran Security Solutions
Federated Mutual Insurance Company
First Internet Bank
Ann & David Frick
GadellNet Consulting Services, LLC.
GEICO Insurance Agency
Dave & Judith Haas
Marvin & Jane Marie Hackman
Cathy & Mark Hardwick
Carrie Henderson & Jack Beatty
Eileen Holland

William & Tracy Holt
Holt Construction
Group
Rona & Jeffrey
Howenstine
John & Susan Huesing
Huntington National
Bank
Hurco Companies, Inc
Incrediplex
Derrick Jackson
Kris & Barbra Jones
Michele & Steven
Kawiecki
Jill Atteberry Kelly
Ann W. King
Karen E. Laine
Josh Landry
Kelly Lavengood
Schenkel
Macquarie Group
Limited
Bette-Jane & George
Maley
Andra & Fred Martinez
Suzanne McClure
McGuire Sponsel, LLC
New Horizons Church
Nothing Bundt Cakes
Tim & Bobbie ONeill
Nigel & Julie Phealon
Chris & Laura Phillips
Protective Insurance
Company
Putnam County
Community
Foundation
RCR Technology
Nick & Joanne
Rutigliano
Saint-Gobain
Schmidt Associates,
Inc.
Blake & Parwana
Schulz
Shadowink
Brian & Robin Shaw
Nick & Allison Shelton
Jean P. Steele
Ericka & Jake Stiles
Katy & Scott Stowers
Stephen & Tina
Sullivan
Abigail Swift
Techlocity
The Indianapolis
Foundation
Charles Thompson
Charitable
Remainder Trust

Thrivent Financial
Ticket to Dream
Foundation
Tipton County
Foundation
United Way Of
Bartholomew
County, Inc.
Stephen Lloyd Van
Soelen
Jayne M. Vaughn
Whetstone & Assoc.
Interior Design
Joe & Julie B. Whitsett
John & Patricia
Wiseman
Matt & Molly Wyse

\$500-999

Anonymous Donors
Brittney Adams
Albright Insurance
Amazon Smile
Foundation
AMG Engineering &
Machining, Inc.
Andrews Construction
Co.
Nicholas & Paolina
Anthony
Bank of America
Charitable
Foundation
Bank of America
Merrill Lynch
Monica
Bebley-Peacher
Donald & Carla
Bennett
Berger Hargis Land-
scape Management
Phil Boots

Bose, McKinney &
Evans LLP
John Bostwick
Jeanna R. Brown
J. Andrew
Concannon
Clara Contreras
Melynda Corya Buher
Kevin & Amber Cox
Cindy Crum
David Churchill
Memorial Fund
Ann & Ken Dee
Kathy & Don Dunbar
Expedient Data
Centers
Heavin Family
Robert S. Flint II
Matthew Fries
Matthew Fryman
Judith Ganser
Geminus Corporation
Elaine & Mark Grant
Bridget Kathleen
Hamilton
David & Gina Hartley
Eugene L. & Mary L.
Henderson
Angela & Marty Hill
David & Celeste Hinko
Carrie Houston
Teresita & Melvin Hunt
Kristi Johnson
Sheila Johnson
Roger Kessler
Dr. Gloria King
Janice Klein
Mike & Julie Lantz
Laviolette Real Estate
Group
Ryan & Hollynn
Lobsiger
Kimberly Lombardi
Katie & Morgan Lucas

Max and Jacqueline
Gibson Foundation
MaxLiving | Indy
Family Chiropractic
LLC
MEMO Marketing
Group
Cameron Miller
Olivia Mitchell
National Association
of Pediatric Nurse
Practitioners
Alan L. Parks
Sheldon Phelps
Dawn & Peter
Polomski
Prudential Advisors
Ellen Ray
Steven J. Riddle
Roche Diagnostics
Corporation
Karen Rominger
Ken & Cathy Rood
Tiffany Sauder
Jenny & Charles
Schalliol
Megan & Dan Scott
Catherine Seat
Nick & Caitlin Smarrelli
Rachelle Steele
Justin & Lindsey Steill
Prentice C. Stovall, Jr.
Stephanie Teeter
Laura Thomas
Drew & Latefe
Trobridge
United Way of
Metropolitan
Chicago
Valve+Meter
Performance
Marketing
William Puls &
Carole Whitsken-Puls



Volunteers from Duke Realty

Our Donors (continued)

\$250-499

Anonymous Donors
Advanced Dental
Care of Anderson LLC
Mary & David Allen
Kirsten Anderson
Mary Lee Anthony
Bank of America
Employee Giving
Campaign
Mark & Julie Barbato
Sherry Beaumont
Sarah E. Beeson
Emily Biehn
Brampton Brick Inc.
Carissa & Tony
Bratcher
Richard Brown
Matthew G. Bucken
Ken & Linda Carter
Cathedral Marble &
Granite
John Chappo
Cit-E-Volve, LLC
Sally Cleveland
Kurt Cohen
Jordan Janae
Coleman
Complete Structural
Consulting, Inc.
Amanda Costa
Decatur County
United Fund
Paul & Kim DeFonce
Delivra, Inc.
Delta Dental
Todd A. Finnell
First Farmers Bank &
Trust
Matthew Fischer
Nancy Fisher
Michael Fodroci
Nathan Frampton
Veronica & Ron Fritz
Front Porch Real
Estate
Pamela & Dustin
Gilbert
Marianne Glick & Mike
Woods
John Grecco
Greenfield Banking
Company
James Haines
Mary & Charles Ham
Belinda & Tony Hamlin

Frank & Linda
Hancock
Susan Hanthorn
Joy Harris
Richard & Melanie
Hayes
Lisa Helton
April Hettwer
Randy Hooper
Doug Humphrey
Celyna Jones
Connie & Larry Kane
Jama Edwards Kaye
Betty & Sam Keaton
Veronica Kelley
Ernie Kelly
Mark Kern
Khepri Partners, LLC.
Ameriprise Financial,
Inc.
Kiel Kinnaman
Craig A. Lehman
Shanice Lewis
Lifestyle Integrations
Inc
Andrea Light
LUNA Language
Services
Joseph Mahin
Thomas Maurath
Craig Melton
Linda C. Melton
John & Sarah
Millspaugh
Julia Moffitt
Michael D. Moon, Jr.
Anne Murphy
MY-TE WINCH-HOISTS
Casey F. Nealy
Brian Nider
Godfrey & Sekayi
Nkosi
Scott Norman

April & Joe Peterson
Amy Phillips
Keith Phillips
Kevin & Sheila Poad
Punch Burger
Putnam Park
Corporation
Ann & Richard
Riegner
Eric Riegner
Stacy Rissing
Debra A. Robinson
Jordan Robinson
Lisa Jeanette Salinas
Dianne Schrack
Scott & Karen Schuster
Carolyn A. Sharp
Jim & Sally Shelton
Robert Shoemaker
Shannon Simmons
Leslie Smith
Snively Machine and
Manufacturing
Ray & Beth Stapleton
Jason & Sara Stellema
Teknabyte Consulting
Darlene Tinsley
Roger & Natalie
Underwood
United Way of
Greater Rochester
United Way of Monroe
County
Ashlee Wilson
Derron Wilson M.D.
Windows & Doors of
Indiana
Donald F. Woodley

\$1-249

Anonymous Donors
AARCH Resource
Group at Honda
Manufacture of
Indiana
Whalen L. Abbott
Oliver Abeleda
Benjamin Abels
Kayley Adams
Ade Adedapo
Cody Adkins
Nancy & Wallace
Aiken
Mary Ajamie
Frank Alan
Craig Alderson
Fred & Angie
Alexander
Becky Allen
Charlotte Allen
Dustin Allen
Evelyn Allen
Janette Allen
Jessica Almon
Jessica Alsman
Nataly Alvarado
CK Andrew
Scott Andrews
Lilian Ang
The Angotti
Foundation, Inc.
Jennifer Arbuckle
Nancy Arbuckle
Amanda Archer
Jose Arias
Brandy Armstrong
Tonya Armstrong
Matthew & Joseph
Ashcraft
Lionell Ausmer, Jr.



Kiddos at the Colts Practice Outing with Huntington Bank

Lex Bachus	Samaria Bolden	Susan & Brian Burton	Shawna Cole
Marika Bagios	Jeff Boller	Corey Bush	Susan Collins
Sylvia Bailey	Sam Bookwalter	Will Butler	Julia Collins-Siefert
Zach Bailey	Carla Borders	Joseph & Sarah	Brian Comer
Bryan Baird	Amanda & Brent Borg	Calderon	Jordan Comfort
Deborah Baker	Atanah Bosch	Scott Callahan	Deanna Connan
Paula Baker	Jennifer Botkin	Brookley Calvin	Russell Connan
Jason Bales	Doug & Julie Bowen	Kristen Cambridge	Andrew Connelly
David Baosithong	Gail Boydston	Jennifer Camire	Robert G. Conrad
Paul R. Barbish	Henry Boyter III	Linda Campbell	Matt Cook
Doug Barnette	Robert H. & Betty A.	Matthews	John Coop
Marcie Barrett	Brabender	Terry Canal	Dawn L. Cooper
Susan Barrett	Steve Bradford	Christopher Caniff	Elicia Cooper
Erica Barron	Carly Brandon	Dennis Carafiol	Kimberly Cooper
Robert Graham	Kenneth Brasseur	Cynthia Noemi	Patricia Cooper
Barrows	Jennifer Braun	Cardona	John & Janel Corbin
Robert Bartley	Melody Braun	Weldon Cargin	Bill & Angela Corley
Angie Battisti	Michael Breeden	Tom Carlson	Whitney Correll
Brian Bauer	Nancy Breedlove	Kollin Carman	Lindsey Costa
Mark & Beth Bauer	Joseph & Laurie	Salvador	Costco Wholesale
Audra A.	Breen	Carmona-Perez	Michelle K. Costello
Baumgartner	Maribeth Brennan	Joanna & Nicholas	Brian & Angie
Bradley Beagle	Kaitlyn Brewer	Carothers	Courtney
Philip Beanblossom	Brick House Resale	Beth Carroll	Santos Covarrubias
Suzanne & Charles	Kelly Bricker	Alan & Eve Carter	Jean Coveyou
Beard	Kent & Debbie Broach	Erin Carter	Kelli Cox-Grady
Marcy Beasley	Emily Faith Brock	Kristie Carter	Greg Cradick
Deborah Beck	DeAndre Brooks	Kyle T. Carter	Lesley & Matthew
Melvin Bell	Talia Brookshire	Lauren Cartmel	Crane
Susan B. Bell	Annette & Peter	Kayla Catron	Jennifer & Paul
David Belser	Brown	Center for Inquiry	Crawford
Mark Beneke	Brooke Brown	School 27	Tristan Crayton
Molly Benitez	Cynthia Brown	Joshua Chalfant	Marilyn Creedon
Emily Berger	Donita R. Brown	Peter Chan	Kim Crockett
Diane Bergeron	Dustin Brown	Christina Chandler	Glenis Cuevas-
Julia Bergman	Helen Brown	Chandler Chapman	Bonano
Jennell Bergwall	Marianne Brown	Jerome Cheatham	Nicole Culley
Barbara G. Bernhard	Micheal Brown	Stephan & Farah	Nicolas Cullina
Jim & Val Bertoglio	Susan Brown	Chery	Holly Cunningham
Megan Bettag	Taranza Brown	Kelly Cheslyn	Piggott
Salli Betz	Laura Brueckmann	Julie Christensen	Ashley Curry
Karen Beyer	Cynthia Brumfield	Mark Christian	Charles Curtis
Mary Beyne	Elaine Bryan	Kriste Chrzanowski	Debra Curtis
Deidre Bias	Ali Bryant	Renolda Gail	Jill Dale
Melissa Bibb	Maria & Justin Bryce	Ciochina	Christopher Daley
Imogene Bibbs	David Bubenicek	Brittany Clark	Cristina Dalton
Kristin & Phil Bickle	Chad Buchanan	Le'Raven Clark	Mary Daves
Missy Bienvenu	Audra Buckman	Will Claywell	Thomas Davidson
Austin Biggers	Margaret Buckman	Judy Cleland	Don Davis
Beth Bigham	Candace Buckmaster	Janice Clemons	Justin Davis
Beth Bishop	Nancy T. Bugher	Lynda Lee Cline	Davis & Davis Electric,
Bryan Bisson	Sarah Burch	Olivia Cloer	LLC
Horace (Jay) Black	Nancy Burger	Adam Cmejla	Brian Davison
Mark Blackstad	Ardelle Burghdorf	CNC System Sales,	Becca Dawson
Angela Blake	Julie Burke	Inc.	Michael Day
Kristina Blankenship	John Burkhardt	Glenn Coapstick	Robert Day & Connie
Steve Bluestein	Heather Burns	Chris Cobbs	Jennings-Day
Donald Boezeman	Jennifer Burns	Jennifer Cochran	Gloria Deane
Robin Boggs	Samantha Burris	Dana Cochran-Wiley	Kevin Deeds

Our Donors (continued)

Jared Defore
 Joe Delamater
 Mark & Molly Denien
 Kenny Dennison
 Christa R. Detzel
 Crystal Gayle DeVault
 Kim Dickson
 Carmen Diener
 Heather Dietz
 Jeff Dill
 Bob Dillon
 Michelle Dillon
 Stephanie Dillon
 Mickie Dimond
 Connie Dishman
 Cyndi & Steve Dixon
 Jeevani
 Doddapaneni
 Andrew P. Doerfler
 Lucy R. Dollens
 Kimberly Donahue
 Molly Donovan-
 Strickler
 Daniel Doucleff
 Angela Douglas
 Jonee' Marie Drake
 Jennifer Driscoll
 Jenni Dropsey
 Tim Drudge
 Glenn Dunlap
 Jo Katherine Durkott
 Nancy Durrett
 Stephanie Dwigans
 Crystal Eagans
 Pat & Kirstine Early
 Daniel Eason
 Eric Ebenroth
 Leroy Eckert
 Sheree L. Edwards
 Donna Eide
 Julia Eiland
 Breanna Ellis
 Lydia Ellis
 Jason Ells
 Kenneth & Sarah
 Eltzroth
 Hannah Sue Emery
 Emmanuel Baptist
 Church
 Employees of BMO
 Harris Bank
 Employees of
 Caterpillar, Inc.
 Employees of Thomas
 & Skinner, Inc.
 Deanna England
 Todd H. Engledow
 Stephen A. Enkema
 David Ernst
 Cari Estes



CB Employees on Halloween

Dean & Veronica
 Evans
 Patrick E. Evans
 Sara Evans
 Eric Evenson
 Ashley Ewing
 Elizabeth Anne Facsko
 Brian T. Fairley
 Stephen Falajiki
 Robert Falender
 Paula Faught
 Lindsay Faulkenberg
 Wesley Faust
 Barbara Feeney
 Elizabeth Ferguson
 Stephanie Fertucci
 Nancy Figg
 Luran Finn
 David Flaherty
 Andrew Flittner
 Nancy Flowers
 Doyle Floyd
 Laura Flynn
 Erna Foertsch
 Michael Ford
 Kassie Fordice
 Frame's Outdoor
 Sports
 Selina France
 Jeffrey Franssen
 Edward Frantz
 Paula Franz
 Freedom 22
 Operaing
 Foundation Inc.
 Steve Freeland
 Rachel M. Freitas
 Fresh Thyme Bags 4
 My Cause
 Steve Fritsch
 Andrew Fuchs
 Heather Fulford
 Jason Fulk
 Jane Fuqua
 Susan Fusek

Coleen Patton Gabri
 Kathy & Steve Gaerte
 David Gagliano
 John Gallagher
 Gamma Phi Delta
 Sorority
 Celine Garland
 Kelli Gatewood
 James & Becky
 Gatman
 Jennifer Gauger
 Jamie Gauker
 Kristie Geiger
 Christopher & Angie
 Gendron
 Ruth Genovely
 Valerie George
 Lori Ann Gerdisch
 Joseph Ryan Gerichs
 Gene Gholson
 Mariam Ghuman
 Krista Gibboney
 Armetria Gibson
 Megan Gifford
 Janice & Paul Gilliam
 Willa Gillispie
 Gibson T. Gilmore
 Brady Gilreath
 Rex Gingerich
 Allicia Girvan
 Give with Liberty
 Employee Donations
 Brian Glasscott &
 Kristen Mason-
 Glasscott
 Gregory Goelzer
 Dr. Louise Goggans
 Anne & Richard
 Gohman
 Eric & Lisa
 Gomperts
 Debra Gonzales
 Deborah Goodchild
 Barry Goodrich
 Doris Goodwin

Mary Goodwin
 Sally Gordner
 Anderson
 Andrew & Sara
 Gosnell
 Ashley Graff
 Susan Graffis
 Darla J. Graham
 Patrick & Cathleen
 Graham
 Greater St. James
 Missionary Baptist
 Church
 Diane Green
 Larry & Cassia
 Greenbaum
 Alexa Greenberg
 Annette & David
 Greene
 Virginie S. Gregoire
 Thomas Grossman III
 Nancy Gruesser
 Kimberly Grunden
 Tamara Guard
 Karen Guerrettaz
 JoeAnn Gupton
 Janet Gutwein
 Kevin & Laura
 Gutwein
 Lisa & Mike Haas
 Matt & Heather Haas
 Paul & Karen
 Hagaman
 Kenneth & Elizabeth
 Hagedorn
 Christine Hahn
 Amy Haley
 Patricia Haley
 Jeremy Hall
 Robert E. & Kathleen
 L. Hall
 Lisa Haller
 Aaron & Lora
 Halterman

David & Jeanne
Hamernik
Henry Hamilton
Holly Hamilton
Hamilton Homes
Christian L. Hampton
Mary Michele
Hampton
Brandon Hamrick
Diana Hancock
Justina Hand
Molly Hanlon
Jeffrey Hansen
Michele Hansen
Caleb Harbert
Starlena Hardimon
Angela Harker
Mary & John Harkness
Nikki Harman
Cathy Harms
J Matt Harrell
Kimberly Harrington
Jennifer Harris
Ryan Harris
Stacy Harris
Barry Hart
Morgan Hart
Pamela Hartley
Cathy Hartman
Bradford Harvey
Tish Haskett
Douglas Hasler
David Hatcher
Dan & Barb Hatfield
Tiffany A. Hawkins
Kent Hawryluk
Andrew Hayenga
Gail Hayes
Tonya Hayes
Sophia Heath Shaw
Annie Heber
Brandi Heck
Bruce Hedstrom
Adam Heeter
David & Donna
Heinekamp
Catherine Heldman
Manell Hembree
Greg Hemmer
Michael Henderson
Erin Henry
Kim Henry
Brian Henson
Herdrich Petroleum
Corporation
Stephen Herlt
Connie Herod
George L. Hewitt, Jr.

Virginia A. Hibbler
Rachel Hickey
Dave & Jeri Hickman
Timothy Higgins
Michael Highum
Bud Hileman
Kris Hill
Martin F. Hill Ph.D.
Mary Ellen Hill
Mandy Hills
Nicole Himelick
Shari Hinds O'Riley
Jenise Hintz
Leah Hobbs
Lisa Hodge
Sarah Hoelting
Dana Holcomb
Sheryl Holko
Michael Holland
Tamara Holland
Lynn & Donald
Holliday
Dennis Hollinger
James Holly
John Holmes
Norma Holsapple
Tom Holsworth
Jordan Homa
Marteen & Stephen
Hooper
Karen Horn
Jan Hornaday
Michael & Mary Lou
Hornak
Julie Horoho
Sharon D. Horvath &
Andrew J. Pike
Ledana Hoskins-
Gregson
Rose Marie & John
Houff
Elissa Howard
Paul Howard
Jenny Howell
Greg Hoyes
Kristina Hubbard
David Hughes
Kent Hughes
Robyn Hughes
Dave & Donna Hullett
Judith Hunden
Allison Hunt
Avery Hunt
Cindy Hunter
Karla Hunter-Frei
Maureen Hunton
Angela Hutchinson
Donald & Elizabeth

Hutchinson
Amy Hyduk-Cardillo
Hyland Software, Inc.
Molly Hyson
Indiana Assoc. for
Healthcare Quality
Anna Inveiss
Jamie L. Irwin
Ky Irwin
Monique Irwin
J&S Mechanical LLC
Jermel Jackson
Peter Jackson
Seethal Jacob
Eliana Jacobson
Denise Jacobus
Dina Jaffe
Janet Jarriel
Sandra Jeffs
Chad Jellison
Melissa Jenks
Jeff & Stephanie
Jenney
Christopher Jensen
Mary K. Jensen
Jen Johansen
Kimberly N. Johnson
L.R. & Carol Johnson
Natalie Johnson
Paul Johnson, DDS
Brian Jones
Bryn Jones
Jeff Jones
Lucy Jones
Lydia Jones
Thomas W. Jones
Ashlie Jonte
Vickie Jonte
Charlie & Cameron
Jordan
Joe & Britney Jordan
Angelo Julovich
Troy & Tammy Kafka
Erin Kandoll
Austin Karazsia
Kathy Karazsia
Elizabeth Karis
Leanne Karr
Robert Kaspar
Raymond Kauffman
Greg & Beatrice
Kaupke
Michael Kaye
David & Jennifer Keller
Mary Keller
Maura Kemm
Jamie & Cody Kendall
Mary Ann Kendall

Susan Ellen Kennedy
Erik Kenny
Kaitlyn Kerker
Christine M. Kerl
Zakir Khan
Lori Kile
Korlon Kilpatrick
Constance Kimball
Beth Kindig
Charles King
Darren King
Mike King
Ross & Elizabeth King
Ellen Kingston
Julie Kirby
Gwen Kirch
Kiwanis Club of Geist
Keith Kizer
Beth Klapper
Ryan & Dana Klein
Gail Kleindorfer
Marika Klemm
Marilyn Klingaman
David Klotzbuecher
Eric Knapp
Betsy Knotts
Gabi Koenig
Michelle Koerner
Alan Koers
John Kolcun
Robert Komula
Fredda M. Kovacs
Terrill Krigger
Matthew Kroes
Vincent Kroon
Catherine Kroot
Kevin Kruckeberg
John Krupski
Takunda Kudhinga
Todd & Kelly Kuebel
Cindy Kunath-Brock
Ann Kyle
Stephen Lacey
Michael & Gina Lake
Dorothea
Lancaster-Raine
Mike & Patricia
Langdon
Kendra Langhans
Sally & Kyle Lanham
Alexa Lankhaar
Tracey Lankhaar
Emily Larrabee
Ashley Larson
Audrey Laureys
Sherri Lauver
Amy Lawrence
Ramona Lawson

Our Donors (continued)

Celeste Lawson-
Lindsey
Jenna Layton
Peter Lee
Kristen Leffel
Richard Legan
Mark Leggio
Richard Lenz
William Leonard
Michael Leous
Allen B. Leslie
Hannah Lewis
James H. Lewis III
Kimberly Lewis
Liberty Mutual
Peggy Lieberman
Jason Lilien
Toni Lin, M.D.
Mark & Margaret
Linden
Cassandra Linn
Liveops Agent
Services, Inc.
Ryan Livingston
Karen Lobdell
Corey & Gabbi
Lockhart
Cathy Loeser
Bonnie Long
Amy & Rene Longoria
Helen Louise
Lois Love
Terrence C. Lovejoy
Julia Lovins
Shawna Lowder
Candace
Luebbehusen
Reba & Albert Luken
Mildred S. Lux
Justin Lykins
Michael Mabb
Lesley Mackellar
Carmena Mackey
Armando Magallanes
Jim Mahin
Mark Mahin
Karen Maier
Sonal Majmundar
Scheri-Lyn Makombe
Marcus & Jesika
Manges
Tina Mangos
Robin Manuel
Samie Marcotte
Stephen & Audrey
Marmon
Marilou Marosz
Kimberly Marsh
Edythe Marshall
Michael & Dianna

Martin
Daniel Riojas Martinez
Luis Martinez
Heidi Marie Mason
Andrea & Roy Massey
Matchett Charitable
Fund
Melissa & Mike Mates
Greg Matheis
Michele Mattice
Marie C. Maude
Kristie Maudlin
Lynn Maury
Shifa Mazher
June Mccane
Marion McDermott
David & Teresa
McDonough
Holly McFadden
Jim McGowan
Carol Mcguire
Carolyn & Tyce
Mcintosh
Loreen A. McKanney
Alex Mckinley
Harry McLaughlin, Jr.
Yves McMullen
Jacob Mcnabb
Jennifer Means
MediCenter
Pharmacy - Liberty
Steven & Rebecca
Meehan
Staci Meek
Calob Meinzer
Bruce & Jeanne
Melchert
Amanda Melsheimer
Rodney & Kathy
Merrell
Lindsey Messer
Larry & Jeannine
Metzing
Dennis Meyer
Jacob Meyerrose
Michelle Mezzanotte
Elizabeth Middleton
Debbie & Mark Midkiff
Diane Mikiska
Andre Miksha
Cheri & Kent Millard
Charla & Jason Miller
Debra A. Miller
Debra Miller
Jill Miller
Jim & Joanna Miller
Keith & Ellen Miller
Liz Miller
Marla J. Miller
Paige Miller

Steven Miller
Lloyd & Sheila Milliken
Barbara Millis
Brian & Ashley Millis
Rachel Mills
Matthew Minick
Kimberly Minnich
Christine Mitchell
MJ Insurance
Laura & Jason Mobley
David Moeckly
Emily Moffatt
Barry Moffitt
Brittany Mohrman
MOMS Club of Carmel
East
Mark Monroe
Heather Montgomery
Beth Moore
Madison Moore
Melissa Marlene
Moore
Michael & Marilyn
Moore
Melissa A. Moran
Terri Moreau
Casey Morgan
Dennis Morgan
Jane Morrison
Joel Moskow
Heather Mudd
Patrick Mullen
Jessica C. Mullins
Dillon J Mund
Emily Murphy
Margo Musnug
Abby Musser
Kristen Myer
Charles Myers

Joel & Mary Kate
Myers
Michael Myers
Stephen & Diane
Nagy
Divya Narayanan
Anne Nation
Debra Nelson
New Light Missionary
Baptist Church
Genira Newell
Pamula Niccum
Karen Nicholas
Rick Nicholson
Paul Niehaus
Frederick Nieske
Alexandra Noel
Vania Noel
Jon Nolan
Kristin Marie Nolan
Brian Norman
Kayla Northcutt
Greg Norton
Jeffrey Nossett
Martina Nowak
Jonni Nowakoski
Karen & Bob Noyes
Cara Nussbaum
Kayla Nymeyer
Sharon L. & Alex D.
Oak
Oak Center, LLC
Shawna & Patrick
O'Brien
Leslie O'Connor
Kim Odle
Andrew Ogborn
Kirstin Anne Olbina
Tim & Melissa Oliver
Dani Opferman



Volunteers from Millennium Sounds

Rosella Orozco
 Paul Orr
 Steven Osborn
 Abi Osthimer
 Matt & Hannah Ott
 Kenny & Sue Ottinger
 Tim Ottinger
 Lindsay Ousley
 Paparazzi Accessories
 Nicole R. Park
 Terry Park
 Aaron Parker
 Rick Parrish
 Brent Pasanen
 Cynthia Pastore
 Archana Patel
 Chandrika Patel
 Bev Patrick
 Jessica Patterson
 Bill Patton
 Chris Paulsen
 Daniel Pea
 Jackie Peacock
 Rick & Linda Pearce
 Marilyn Pecsok
 Bob Peltz
 Robin Pemberton
 Nicki Perrin
 Sharlene Persinger
 Craig Peters
 Marc & Lesley Pfleging
 Keith & Karen Phelps
 Leslie Phillips
 Marilyn Phillips
 Sarah Phillips
 Virginia & Keith Phillips
 Andy Pickett
 Kiran Piniseti
 Pledgeling Foundation
 Nancy Poetz
 Brandee Polak
 Shana & Andy Polk
 Cathy Pollard
 Marcia Pollard
 Laura Pope
 David & June
 Popplewell
 Qiana Porter
 Dr. Priscilla Potter
 Juliet Poulos
 Kristy Powell
 Alex Powers
 Brian Pozen
 Anna Prall
 Jennifer Pratt
 Robby Pratt
 Shawn Pratt
 President's
 Roundtable Of
 Indianapolis

Traci Price
 Jennifer M. Pruitt
 Connie & John Purcell
 Josh Purvis
 Todd Pyatt
 Jake Query
 Jennifer Query
 Jerrie Quinn
 Marcia Raab
 Angela Rabensteine
 Sue Radcliffe
 Barbara Rady
 Judith & Harry Rail
 Mindy Rainwater
 Steve Rake
 Steve Ramey
 Ramey Plumbing &
 HVAC
 Justin & Emily
 Ramquist
 Shelly Ramsey
 Jason W. Randolph
 Christine Rapp
 Patricia & Mark
 Rasdall
 Patrick Ratekin
 Amit Rath
 La-Risha Ratliff
 Mindy Rawlins
 William Ray
 Chris Rebic
 Jeff Rechtzigel
 Don Redic
 Cheryl Reed
 Dean N. Reed
 Jason Reed
 Robert & Sharon Reed
 Liz Reeder
 Stacie Rees
 Caitlin Reese
 Katelin Reeves
 Sarah & Joseph
 Reeves
 Sandra Reiberg
 Chris & Lesley Reid
 Natasha Reilly
 Nick Reinhart
 Laura Reuter
 Becky Rexroth
 Brittany Reynolds
 Suzanne Rhea
 Doug Rice
 Julie Rice
 Eric Richards
 Jason Richardson
 Angela Riedel
 Lisa Rieken
 Casey Riggs
 Gloria Riggs
 Scott Rinehart

Conrad Riser
 Ritter's Frozen Custard
 Jacqueline Riviere
 Dana Roberts
 Gidget Roberts
 Kathleen Roberts
 Katie Roberts
 Phillip & Chris Roberts
 Daphne Robinson
 Doris Robinson
 Stephen A. Robinson
 Doug & Amy Robison
 Brent Rockwood
 Jose Rodriguez
 Carol Rogers
 Deen & Christie
 Rogers
 Janet Roller
 Kimberly Roop
 Frank Ross
 Haskell & Sandra Ross
 Ann C. Roth
 Harrison Royce
 RPC, Inc.
 Meta L. Rudy
 Carl Runnels
 Dave Ruskowski
 Tasha Russ
 Amanda D. Russell
 Harriet Rybolt
 Tamara Sagstetter
 Alicia & Michael Sahn
 Paula L. Saks
 Chris Salerno
 Salesforce.org
 Donn Salladay
 Anita Samuel
 Jose Santos-Diaz
 Eric Sarjeant
 Katherine Sarver
 Amanda Saucerman
 Ryan Saxon
 Caitlin Scanlon
 Chuck & Jill Schaefer
 Joseph Scher
 Kimberly Schlitt
 Connor Schmok
 Patrick & Virlee
 Schneider
 Alison Schreiner
 Emily Schroeder
 Steve Schroeder
 Angie & Pat
 Schubach
 Bev Schultz
 Derek Schultz
 Emma Schwab
 Shaun Schwartz
 Pamela & John
 Schwarz

Carol Sears
 Barbara Selman
 Chase Selman
 Cody Selman & Jamie
 Little
 Cynthia Selman
 Lee Selman
 Julie & Richard Senn
 Stephanie Nicole
 Seyfried
 Rashida Shabazz
 Regina Shamp
 Pat Shane
 Brittany Shaver
 Deborah Shaw
 Jeannette Shaw
 Amanda Shelby
 Cat Shell
 Emily J. Shelton
 Tom Shively
 Bill Shock
 Brian Short
 Timmy Shrout
 Fran Shumaker
 Steve Sidebottom
 Rob Sidney
 Gina Signore
 Wesley Silk
 Esther Singley
 Marilyn Sipole
 Clare Skevington
 David Skrzypczak
 Smart IT Staffing, Inc -
 Corp Direct
 Matthew Smerdel
 Cheryl Smith
 Derrick Smith
 Lara & Trent Smith
 Laurita Smith
 Pearson Smith
 Ruthie Ann Smith
 Teresa Smith
 Tonya Smith
 Steve & Casey
 Smitherman
 Chelsea Smock
 Rose Snider
 Steve & Vicki Snider
 Stacy Snively
 Jamela Snow
 Jennifer Snyder
 Jim & Connie Snyder
 Karen Somers
 Clint & Monica
 Sommer
 Annie Spencer
 Terry Spencer
 Daniel Spitzberg
 William Stafford
 Kerstin A. Stahl

Our Donors (continued)

Abraham Stanley
Deanna Stanley
William Stapleton
Nancy Starke
Jamie Steele
Bruce & Kris Steinman
Yvonne Stephens
Tony Stevenson
Mathew Steward
James Stewart
Nick Stewart
Vincent Stinnett
Jennifer Stinson
Tiffany Stoner
Brian Stovall
Jennifer Strakis
Heidi Straub
Jeffrey Suico
Carla Sullivan
Casey Sullivan
Hannah Sullivan
Mary Sullivan
Rick Sumner
Sun King Brewing Co.
Peggy Surbey
Drake Sutton
Kris Sutton
Richard J. Swallow
Nancy Swarts
Heather Swartzell
James Sweeny
Carole Szentesy
Joe Taff
Jill Tanner
Karen Tarver
Tate Bowen
Daugherty Funk
Spandau LLC
Brittany Taylor
John M. & Pilar
Moreira Taylor
Leslie Taylor
Tera Teachout
Robert J. Tender
Margaret Terbush
David & Stephanie
Teufel
Melody Thammavong
Nancy Thomas
Penny Thomerson
Susan Thompson
Lindsay Thornton
Delisea R. Threat
Chance Thurman
Brooke Tichenor
Lisa Tinsley
James Tisdale
Jeanette Tonne
John & Patty Torr
Jeremy Tranter

Colleen Travis
Jessica & Jonathan
Trimble
Rick Trimpe
Janie Trippe
Jennifer Tromm
Leann D. Trotter
Kenneth & Elizabeth
Tuller
Anna Turner
Carlie Turner
Jada Turner
John Twenty
Zoe Unger
United Way of
Greater St. Louis
Unitedhealth Group
Lou & Margaret
Urbancic
Joe & Maggie Vail
Jennifer Valenzuela
Soraya Van Horn
Dave & Martha Van
Mook
Carlenis Velazquez
Daniel Vermillion
Lauren Vincent
Elizabeth Voith
Teresa Vorhees
Mandy Walker
Mark P. Wallischeck
Dea Walls
Cheryl & Dennis
Walters
Joe Walton
Ben Waltz
Joe Wanninger
Joseph Wanninger
Matt Ward
Jeff Ware
Phelgar Washington
Geoffrey Watkins
Shirlee Watkins
Andrew Watson
Lukas Watson
Megan Watson
Anthony Watts
Michael Riley Watts
Vanessa Weathersby
Shelly J. Weaver
Pamela Webb
Elizabeth Weber
Patti A. Webster
Beth Weetman
Joseph D. & Barbara
J. Weidenbener
Christopher Weiler
Kami Weisgerber
Eric Welch
Karen Welch

Mandi Welch
John & Pam West
Kimmie J. West
Ann Westfall
Heather Weston
Patricia Wheeler
Deanna Whetstone
Karen Whitaker
Sally Whitaker
Whitewater Valley
REMC
Robert & Debbie
Whitman
Russell Whittaker III
John W. Wicker
Lisa & Steve Wickes
Jennifer Widmer
Dustin Wilcox
Kyle Wiley
Troy Wilkinson
Derek Willard
Brett & Heather
Williams
David Williams
Dorothy Williams
Grace Williams
Josh Williams
Nickolas Williams
Shawn P. Williams
Shea Williams
Sherry L. Williams
David Williamson,
MBA, SHRM-CP
Megan Wills
Briana I. Wilson
Dustin & Sherri Wilson
Mike Wilson
Deb Wims
Jill Winkelman
Natalie Winters
Alexis Wise
Ashley D. Wise
Rachel Wise
Katherine Witzig

Judy Wolven
Turner & Megan
Woodard
Woodruff Foods, Inc.
Teresa Woods
Tamra Woodworth
Pendana Wooten
Wanda Worley
Annie V. Wortham
David Wortman
Michelle & Joe
Woschitz
Cameual Wright
James Wright
Haley Witt
Fred & Susie Wurster
Becky Wykes
Wyndham
Destinations
Yishuang Yang
Charles Yates
Elise Yates
Taylor Yates
Peggy Yeary
Adriana Yin Gao
Aaron York
Cynthia Yosha-Snyder
David E. Young
Erica Young
Markeith Young
Katherine Younger
Richard C.
Youngstafel
Janie Yuill
Beth Zaberdac
Bettina Zaneteas
Liza Zapata
Jeffrey Roy Zartman
Anddrea Zeek
Tracy Zimpfer
John & Michelle
Zollman
Maxine Zollman
Mike & Dayna Zook
Tom & Carrie
Zupancic



Eli Lilly volunteers at the Rachel Glick Courage Center

Tributes

Chris & Claire Devlin

*Kelly Lavengood
Schenkel*

Nancy Frankel

Carol Rogers

Ann S. Frick

*The Angotti Foundation,
Inc.*

Bill and Angela Corley

Jo Katherine Durkott

*Sharon L. and Alex D.
Oak*

*Cheryl and Dennis
Walters*

Carrie Henderson

Susan B. Bell

Michele Kawiecki

Eric Knapp

Betsy Kerr

*John M. and Pilar Moreira
Taylor*

Janice Klein

Clare Skevington

Donna Reynolds

Marcia Pollard

The Showalter Family

John and Cheryl Battisti

Angela Smith-Jones

The President's

Roundtable of Indianapolis

Stephanie Swarts

Nancy Swarts

Jean Tacoronte

Molly Donovan-Strickler

Memorials

Dorothy Burnside

*The Children's Bureau
Auxillary Committee*

Ann Frick

Joyce Ciochina

Renolda Gail Ciochina

David and June

Popplewell

Patrick and Virlee

Schneider

Phyllis Colin

*Bette-Jane and George
Maley*

Zora Edick

Darla J. Graham

Beth Kindig

Marilou Marosz

Steven and Rebecca

Meehan

Debra A. Miller

Kenny and Sue Ottinger

Chris Rebic

Chuck and Jill Schaefer

Pamela Webb

Teresa Woods

Andy Henderson

*Eugene L. and Mary L.
Henderson*

Betty J. Hoke

*The Anderson Noon
Exchange Club*

Linda Ann Holland

Michael W. Holland

Martha Hudson

Lisa and Steve Wickes

John and Michelle

Zollman

Maxine Zollman

Lou Jensen

Mary K. Jensen

Suzanne Leonard

Melissa and Mike Mates

Haskell Ross

Melissa and Mike Mates

Suzanne McClure

Robert C. Sherman

Margaret Buckman

Cynthia Skehan

*The Children's Bureau
Auxiliary Committee*

Melissa and Mike Mates

Paul F. Tuller

*Kenneth and Elizabeth
Tuller*

Byron K. Westfall

*Wallace and Nancy
Aiken*

Kathy and Don Dunbar

Ann Frick

Annette and David

Greene

Jane Marie Hackman

David and Jennifer Keller

Sally and Kyle Lanham

Melissa and Mike Mates

Debbie and Mark Midkiff

Diane Mikiska

Karen and Bob Noyes

Rick and Linda Pearce

Gloria Riggs

Joseph Scher

Michael Woschitz

Michelle and Joe Woschitz

Family Connection Center is New Home to Adoption & Foster Care Services



The Children's Bureau Foundation purchased the Family Connection Center (FCC) in January, 2019. The new space, located at 3610 N. Meridian Street, will undergo renovations to create a specialized environment for children and families in need of adoption and foster care services.

Four rooms in the building are being converted to create a therapy wing. Each room will be designed for specific age groups, including a "Crash and Bump" room for targeted sensory-based therapy.

Attachment to primary caregivers is critical to a child's development and the ability to form healthy relationships throughout life.

The specialized trauma and attachment therapies

to be provided at the FCC will address traumatic experiences endured by children before being removed from their biological homes. The therapies promote a healthy bond between children and their new families. They also teach the new family how to parent children who have suffered these traumatic experiences.

Children's Bureau specializes in brain-based attachment therapy that utilizes the science of brain development in children to create the pathways their brains need to effectively bond with their new families. More than 80 percent of children participating in the program demonstrate significant improvements in their ability to trust and form emotional bonds. The longer

term result is increased stability and permanency for them and their families.

Over the past 5 years, Children's Bureau has been able to ensure that 100% of the children who received post-adoptive services remained in their adoptive homes, despite some of those children having very specialized needs that made caring for them challenging.

The improved and increased capacity of the space will allow for continued growth in the program and the ability to serve more children and families.

Volunteers

Stephen Abdalla
Yousef Abdeldaiem
Richie Abedin
Benjamin Abels
Daniel Adams
Matthew Adams
Scott Agness
Libby Akers
Bryan Albright
Connie Albright
Jason Alder
Kristian Aleixo
Rebecca Allen
Amanda Allison
Jessica Almon
Lisa Almon
Clayton Anderson
Katelynn Anderson
Katie Anderson
Elaina Andrews
Karla Armenta
Andrea Armstrong
Lindsay Armstrong
Ashley Asante-Doyle
Sean Ash
Joseph Ashcraft
Matt Ashcraft
Veronica Austin
Fern Bachner
Candice Baggett
Michelle Bailey
Kelly Baker
Michael Baker
Ralph Balber
Michelle Ball
Deborah Balogh
Andrew Bang
Jim Bang
Chase Barber
Jason Barker
Sierra Barnhart
Tucker Barnhart
Maggie Bastin
Sherry Bastine
Laura Bauer
Sherry Beaumont
Carla Bennett
Lisa Berry
Renee Betts
Beth Bibb
Laurie Bickell
Tina Birge
Paige Bixler
Rachel Bogle
Laura Bohnert
Anthony Bonacuse
Craig Borgert
Jacqueline Bossard
Christopher Bova
Brioshia Boyd

Aaron Bradshaw
America Bragg
Maria Brand
Rani Brar
James Breakwell
Joe Breen
Tamea Brinson
Cathryn Broderick
DeAndre Brooks
Talia Brookshire
Angela Brown
Austin Brown
Stephen Brunson
Maria Bryce
Michael Bultemeier
Alexander Burgess
Donte Burkett
Jordan Burns
Blonnie Burroughs
Nicholas Byrdo
Marc Caito
Jeff Carder
Brian Cardinal
Nancy Carlson
Christian Carmin
Chelsea Carr
Adam Cassel
Gordon Castetter
Greg Cauble
Jillian Cawi
Jenny Challis
Amy Chambers
Rohit Chatterjee
Fengyi Chen
Songmei Cheng
Shelly Cherry
Beth Claflin
Halie Clark
Brooke Clawson
Andrea Clem
Jason Clodfelder
Mallory Cloer
Olivia Cloer
Tina Cloer
Glenn Coapstick
Jill Cody
Jordan Coleman
Bridget Collins
Erik Compton
Sara Cook
Cody Coppotelli
Whitney Correll
Rebekah Corwin
Amber Cox
Kevin Cox
Amy Cozad Magaña
Mike Crawford
Will Crawford
Ellie Crumley
Nicolas Cullina

Jennifer Curran
Sara Curts
Dan Cutler
Darren Daily
Denise Dank
Jessica De La Cruz
Ann Dee
Alan Deng
Jim Denny
Pierre Desir
Randie Dial
Joy Diarra
Nick Dodge
Unika Donner
Brandon Dotson
Brooklyn Doup
Steven Duff
Garrett Duffy
Dawn Dunkman
Jaeline Duré
Matt Ebersole
Beairshelle Edme
Jenny Edwards
Terri Edwards
Allison Ehlers
Julia Eiland
Nora Elder
Mike Elliott
Kenny Eltzroth
Lyneisa English
Samantha Errard
Salvador Espinoza
Sara Evans
Dawn Evans-Casey
Katherine Fagan
Shuck
Charlene Farabaugh
Derek Farnworth
Gretchen Fasnacht
Aubrey Feipel
Erin Feldmeyer
Chris Ferguson
Stephanie Fertucci
Amber Fields
Amanda Fisher
Nancy Fisher
Alex Fleck
Laura Flynn
Bryan Foley
Madison Foster
Richard Francis
Sarah Francis
Kevin Freeman
Ann Frick
Natalie Frieden
Veronica Fritz
Jenny Froehle
Kristin Fromson
Matt Frongillo
Adi Gal

Matt Gale
Katie Galvin
Nick Galvin
Peggy Gardner
Renee Garino
Brandon Garmon
Debra Garrett
Christine Gaskell
Jordan Gawarecki
Andrew Gebuhr
Chris Gendron
Gary Genier
Kory Gentry
Valerie George
Justin Gephart
Kayley Gerbec
Joseph Gianforte
Amanda Gillen
Brady Gilreath
Joseph Giordano
Erica Glenn
Melissa Godwin
Mark Goetzinger
Lisa Gomperts
Jim Goodwyn
Chelsea Gray
Lisa Gray
Alexa Green
Debra Green
Doug Greer
Lindsey Griffith
Jasmine Grimes
Jordan Groves
Jennifer Grubbs
Nancy Gudeman
Adelle Gullion
Heather Haas
Evan Hagedorn
Myles Hager



Robert Gray, Director,
Corporate Relations with
Cassandra Coleman, Sysco

Volunteers (continued)

Joe Halstead
Sierra Hamilton
India Hammond
Jimmy Hammond
Brittany Hamrick
Zakia Hanati
Chris Hancock
Jana Harrell
Tyron Harris
Michelle Harrison
Janice Hart
Jonathan Hartz
Ariel Harvey
Brittany Harvey
Jason Hatch
Joe Hawkins
Kye Hawkins
Rebeca Hayes
Richard Hayes
Rick Hayes
Stephanie Hazlett
Eboni Hearn-Lindsey
Matt Heavin
Annie Heber
Debbie Heinz
Larry Heinz
Don Heitman
Sara Heitman
Carrie Henderson
Connie Herod
Sue Herrmann
Anthony Heygood
Michael High
Leah Hobbs
Lisa Rae Hodge
Lisa Hofferma
Kelleree Hoggard
Donna Hoggatt
Lynn Holliday
Bill Holt
Brad Holt
Rebecca Holt
Deborah Honeycutt
Clayton Hooks
Zuleica Hoover
Jim Hopper
Carrie Houston
Patrick Howe
Rona Howenstine
Ben Hue
John Huesing
Rachel Hughes
Nyree Humbert
Penny Hunsicker
Angie Hutchinson
Molly Hyson
David Inman
Meredith Iozzo
Michala Irons
Carla James

Janeen James
Garret Jochem
Eric Johnson
Jeremiah Johnson
Karen Johnson
Kenya Johnson
Mary Johnson
Micah Johnson
Steele Johnson
Fred Jones
Susie Jordan
Troy Kafka
Lydia Kaiser
Michele Kawiecki
Dalton Kellett
Jill Kelly
Jamie Kenyon
Matt Kenyon
Mark Kern
Betsy Kerr
Susanna Khan
Amir Kharleed
Bridgett Kilgore
Allison Kime
Gloria King
Nicole King
Terrie King
Jenna Klein
Nina Klemm
Dustin Kleppe
Maggie Knox
Derek Koeneman
Matt Koers
Dawson Koesters
Rayne Krueger
Karen Laine
Ashley Lambert
Kim Landers
Jenna Lane
Lesle Lane
Yanbin Lao
Ashley Larson
Scott Larson
Massimo Lattanzi
Curtis Lawrence
Ghislene Legere
Mark Leggio
Bill Lehman
Jenni Lehman
Bryan Leniski
Michael LeSure
Andrea Levis
Andi Ley
Junhong Li
Scott Lindley
Caitlin Liskey
Jamie Little
Heather Lloyd
Ryan Lobsiger
Veronica Locker

Katie Lodato
Susan Long
Emily Longnecker
Amy Longoria
Jon Loomis
Angela Love
Connor Love
Eric Lowery
Yang Lu
Emily Luken
Desiree Luster
Justin Lykins
Kim Lykken
Zachariah Lyons
Joe Macri
Nicole Madsen
D'Andria Majors
Bette-Jane Maley
Katie Maloney
Darren Manning
Janet Manuel
Troy Marchand
Michael Martin
Carlos Martinez
Erin Martz
Kristen Mason-
Glasscott
Katy Mattson
Claire Mauschbaugh
Dorie Maxwell
Alex May
Josh McArdle
Melanie McAtee
Kimberly
McElroy-Jones
Holly McFadden
David McGuire
Troy McIntyre
Corey Medaris
Calob Meinzer
Amanda Melsheimer
Jeanine Metzing
Debbie Meyers
Liz Michael
Matt Millard
Christine Miller
Demetric Miller
Jeff Miller
Meghan Miller
Nikki Miller
William Miller
Brian Millis
Dusty Mills
Roberta Minor-Hardy
Olivia Mitchell
Matt Mitrione
Anne Montgomery
Heather Montgomery
Tresea Moore
David Morris

Stephanie Morris
Cheyann Morrison
Haynes Morrison
Ifeoma Morrison
Jessica Morrison
Karen Morrow
Cindy Morse
Natalie Moya
Marc Mullins
Douglas Murphy
Tisha Myer
Jasmine Nave
Matt Nelson
Brian Neuffer
Heidi Newman
Tanner Niehaus
Daniela Nieto
Kayla Noel
Randall Nored
Shantrice Norfolk
Kayla Nymeyer
Dan O'Brien
Danny Oldham
Sarah Oliver
Jeremy Owens
Jon Owens
Tonja Padgett
Erinne Palmer-Mitchell
Jones
Anjali Panchal
Kuldip Panchal
Aaron Parker
Stoshala Payne
Phiandra Peck
Phuoc Pham
Chris Phillips
Ginny Phillips
Sarah Phillips
Zach Phillips
Adam Pickering
Jobie Pinner
Natallia Pintasava
Angela Plascencia
Jaymie Pliskey
Kevin Poad
Emily Podbelski
Jessi Pollard
Brad Polo
Cheryl Poole
Christopher Prange
Scott Prather
Landon Price
Matt Purcell
John Purdy
Adam Pusztai
Jake Query
Hannah Quinn
Megan Rabb
Betsy Radovich
Josh Raver

Carol Ray
 Sean Reddington
 Jesse Reed
 Sunny Reed
 Matt Reeve
 Colleen Rego
 Ashlee Rexroth
 Amanda Reyes
 Deyna Reyes
 Donna Reynolds
 Hannah Reynolds
 Hannah Rhodes
 Luke Rhodes
 Brandi Rice
 Heather Ricks
 Kyle Riddle
 Brad Ring
 Daniel Riojas Martinez
 Cindy Ritchie
 Chris Roberts
 Katie Roberts
 Matt Roberts
 Tim Roberts
 Julianne Robinson
 Tim Roeder
 Andrea Roll
 Cathy Rood
 Lori Rosales
 Davante Rowe
 Meta Rudy
 Sebastian Saavedra
 Rebecca Sanderson
 Jessica Sands
 Tyler Santuro
 Goldie Scales
 Caitlin Scanlon
 Kris Schaefer
 Pat Schafer
 Samuel Scheib
 Jeff Schenkman
 Kelly Schenkman
 Vivian Schmal
 Connor Schmok
 Lauren Schneider
 Erin Schrier
 Alex Schroeder
 Blake Schulz
 Katie Schutz
 Megan Scott
 Melinda Scott
 Britaney Searing
 Adam Sego
 Deena Seibert
 Cody Selman
 Peggy Selvey
 Rashida Shabazz
 Robin Shaw
 Jack Shell
 Nick Shelton
 Sally Shelton

Adam Shields
 Kara Showley
 Sean Silveira
 Morgan Sizemore
 Jamie Skerston
 Caitlin Smarrelli
 Christy Smith
 Dick Smith
 Helen Smith
 Jordan Smith
 Kelly Smith
 Rachel Smith
 Shelly Smith
 Alexis Smyth
 Adrian Snyder
 Angela Sorrell
 Marcia Souers
 Jennifer Spector
 Pat Spence
 Steve Spence
 Ben Spires
 Julie Springman
 John Sprouse
 Ana Spurgetis
 Eva Spurgin
 Beth Stapleton
 Ray Stapleton
 Jennifer Starnes
 Amanda Starrantino
 Tad Starsiak
 Mina Starsiak Hawk
 Rachelle Steele
 Jessica Steinacher
 Alli Steinbaker
 Ericka Stiles
 Jake Stiles
 Amber Stocks
 Prentice Stovall
 Catherine Stowers
 Marcus Strawhorn
 Sandy Strawhorn

Stephanie Strodtman
 Jennifer Sullivan
 Santina Sullivan
 Scott Swan
 Abby Swift
 Laura Sylak
 Lisa Syverson
 Brett Tanaka
 Sharon Teipen
 Shadowink
 Scot Theobald
 Kelli Thomas
 Sarah Thomas
 Diane Thompson
 Le-Angela Thompson
 Mathew Thompson
 David Tilford
 Steven Tinius
 Annie Trampont
 Lydia Tremaine
 Jennifer Tromm
 Jeric Tumang
 Dorothy Turner
 Roger Underwood
 Amy Van Duyn
 Malu Velasco
 Victoria Vickers
 Olivia Vicory
 Victorian Victor
 Ellie Voith
 Stevi Waggoner
 Ben Waltz
 Joe Ward
 Anesia Warren
 Chris Waycott
 Ronald Webb
 Delaney Weddle
 Mike Weiss
 Vince Welch
 Kristen Wentworth

Adam Westfall
 David Wheeler
 Ana Whitaker
 Halie Whitaker
 Heather Whitaker
 Kimberly Whitaker
 Margie Whitaker
 Steve Whitaker
 Pamela White
 Carole Whitsken-Puls
 Jennifer Whitt
 Jennifer Widmer
 Trent Wilburn
 Elaine Williams
 Amy Williamson
 Michael Winborn
 Sophie Winger
 Elizabeth Wisdom
 Jarrod Wiseley
 Kelly Witt
 Ginger Witte
 John Wolfe
 Taylor Wong
 Amy Woodall
 Carly Woodruff
 Sean Worland
 Ben Worrell
 Violetta Wray
 Megan Yanders
 Adam Yates
 Ramarao Yeleti
 Katie Zang
 Hillary Zeigler
 Roberta Ziccarelli
 Daniel Zimmerman
 Rhea Zink
 Micki Zuch
 Tom Zupancic
 Bob Zurface
 Karen Zweck



Young Professionals Advisory Board at the 2019 Cornhole Tournament

You made a difference in 2019.

You created families

363

fathers were
connected with
their children.

You transformed communities

\$1,444,056

was provided
in emergency aid.

You provided joy

953

holiday wishes
were granted.

The counties served in 2019

